



# The Conduit

Energy, Transit, Commerce



# The Island Transect

GROUNDING JAMAICA'S FUTURE



# Gas Riots 1999

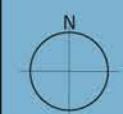
A portent of the future





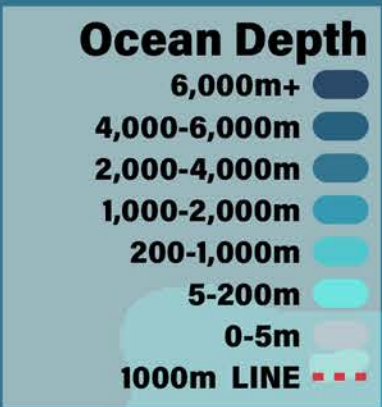
MONTEGO BAY

KINGSTON





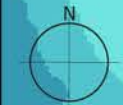
# Ocean Thermal Energy Conversion (OTEC)



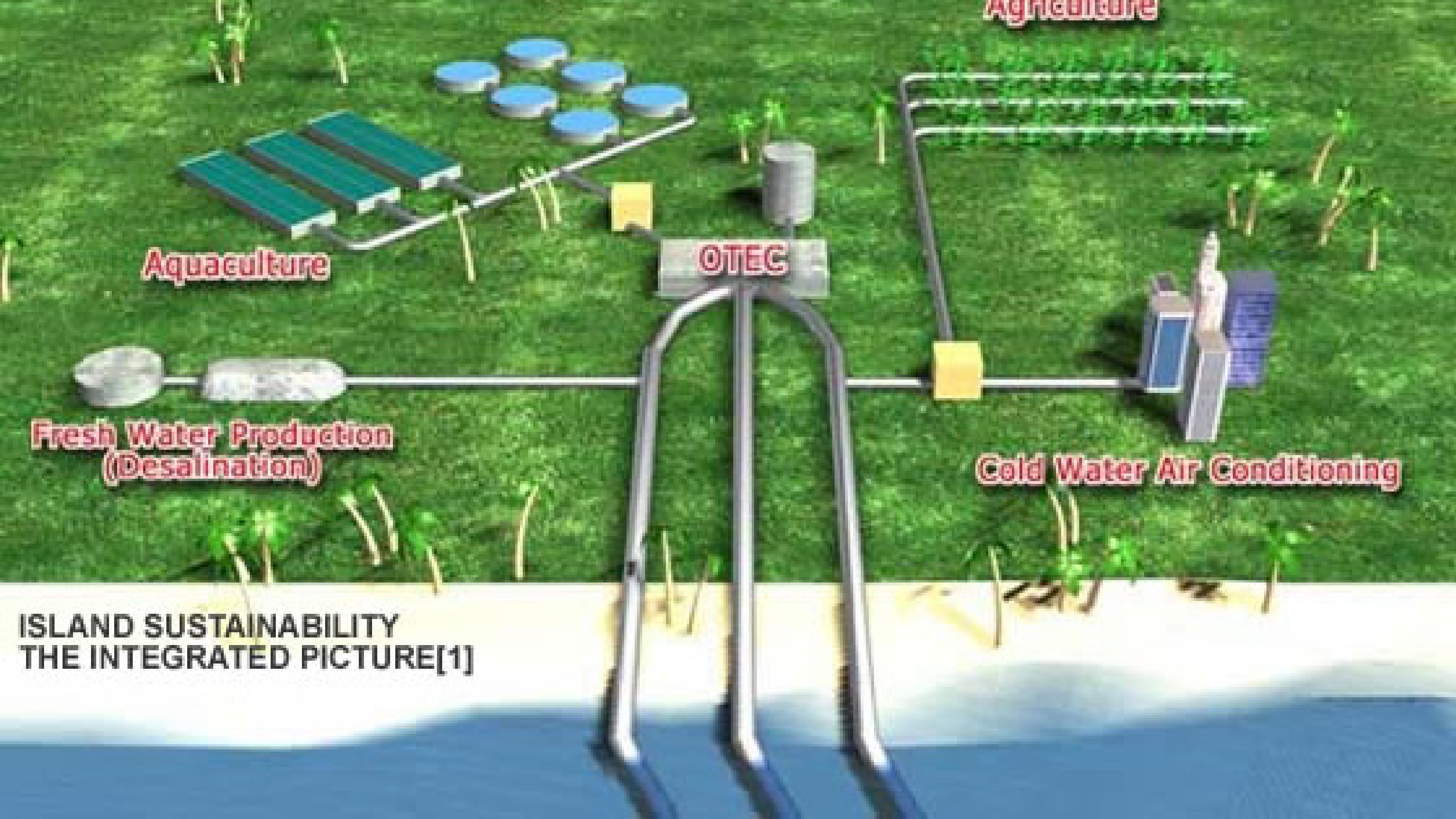
MONTEGO BAY



KINGSTON







ISLAND SUSTAINABILITY  
THE INTEGRATED PICTURE[1]



# Wind Energy Potential





# Biogas Energy Potential





# SOLAR RESOURCE MAP

## PHOTOVOLTAIC POWER POTENTIAL JAMAICA



Long term average of PVOUT, period 1999-2018

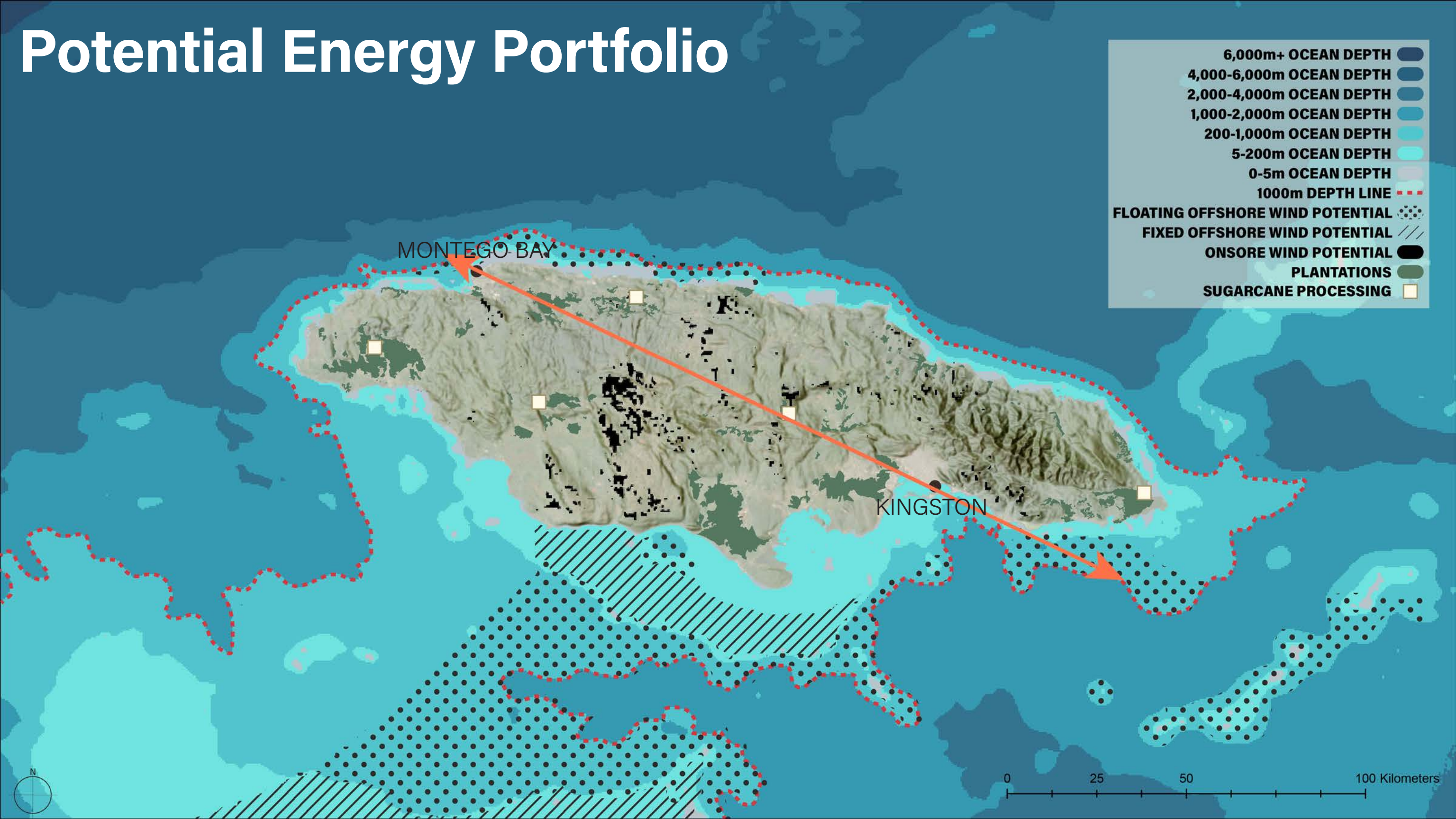
Daily totals:	3.6	4.0	4.4	4.8	
					kWh/kWp
Yearly totals:	1314	1461	1607	1753	

This map is published by the World Bank Group, funded by ESMAP, and prepared by Solargis. For more information and data, visit <http://globalsolaratlas.info>.

0 25 50 100 Kilometers

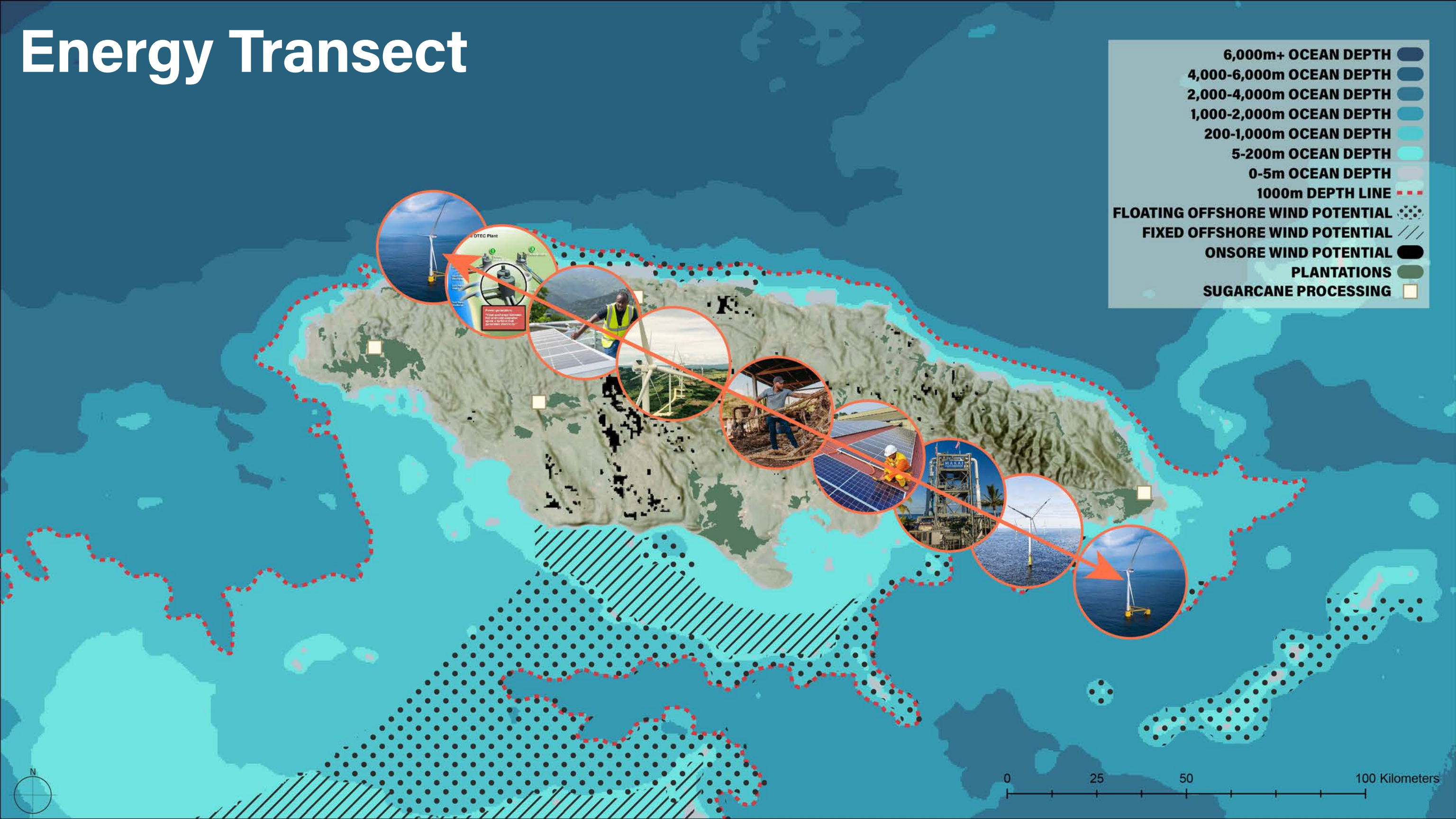


# Potential Energy Portfolio





# Energy Transect





# Energy-Inspired Material Culture



Sugar cane block construction



Sugar cane block construction



Working Harbor-Inspired Design



Blocks made from sugar cane bagasse



Sugar cane block construction



Merced Market, Mexico City





# UDC Project Site





# Existing JUTC Lines





# Reintroduction of Freight/Passenger Rail





# New Light Rail Loop





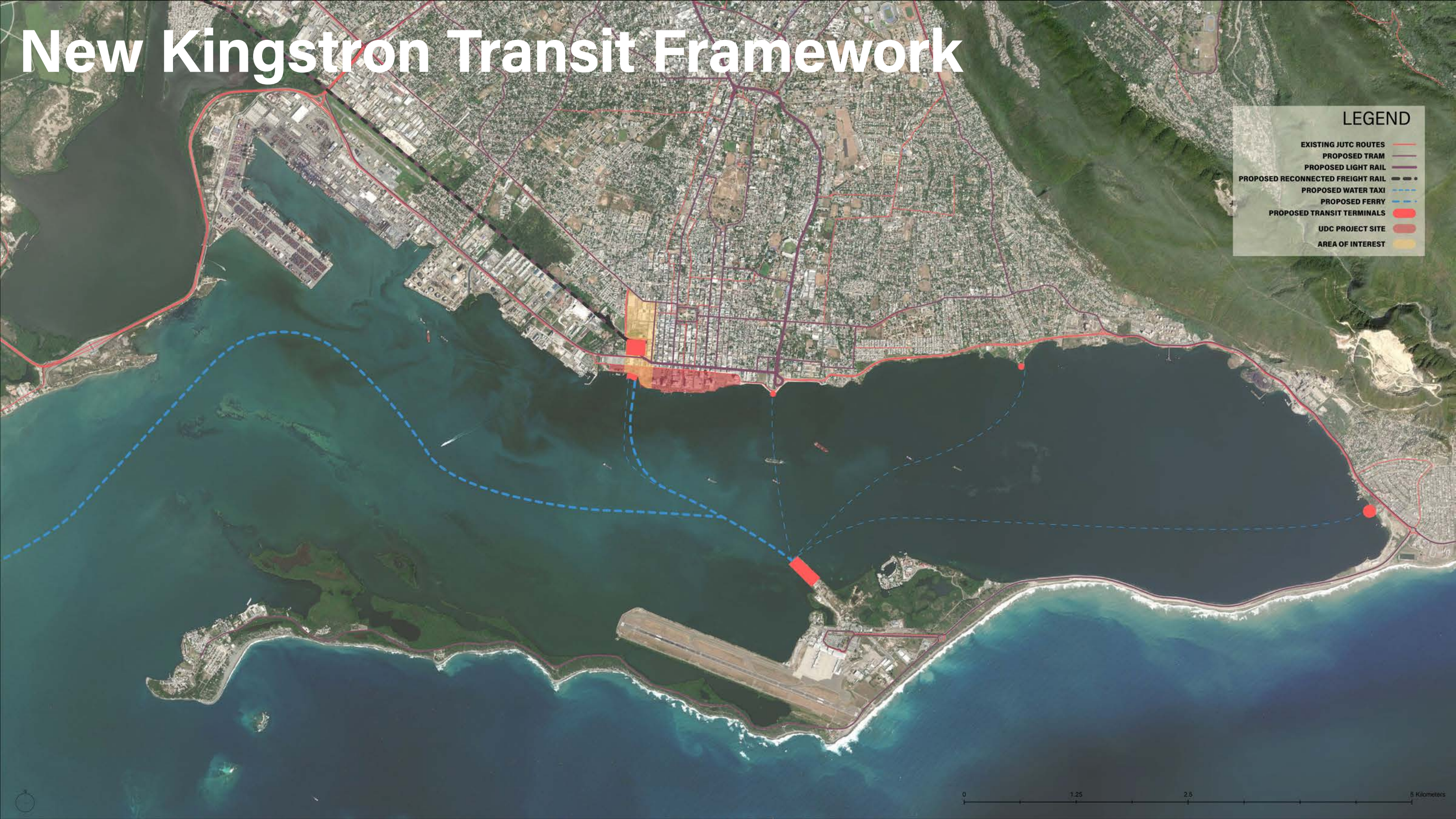
# Reintroduction of Tram Network





# New Ferry and Water Taxi Lines





# New Kingstron Transit Framework

**LEGEND**

- EXISTING JUTC ROUTES
- PROPOSED TRAM
- PROPOSED LIGHT RAIL
- PROPOSED RECONNECTED FREIGHT RAIL
- PROPOSED WATER TAXI
- PROPOSED FERRY
- PROPOSED TRANSIT TERMINALS
- UDC PROJECT SITE
- AREA OF INTEREST





Area of Interest (AOI)





# Extant Buildings and Parking



0 125 250 500 Meters

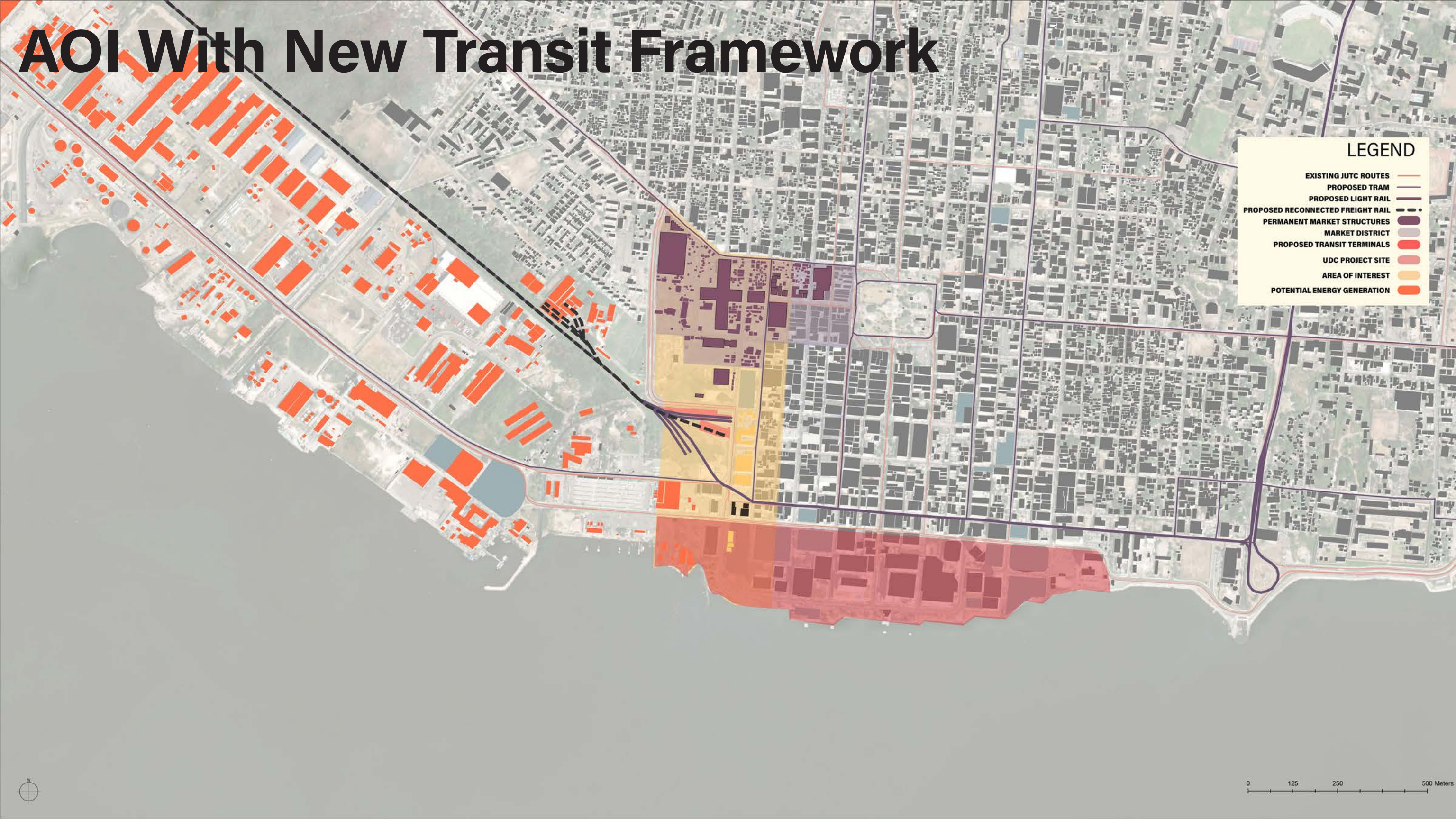




AOI







# AOI With New Transit Framework

LEGEND

EXISTING JUTC ROUTES

PROPOSED TRAM

PROPOSED LIGHT RAIL

PROPOSED RECONNECTED FREIGHT RAIL

PERMANENT MARKET STRUCTURES

MARKET DISTRICT

PROPOSED TRANSIT TERMINALS

UDC PROJECT SITE

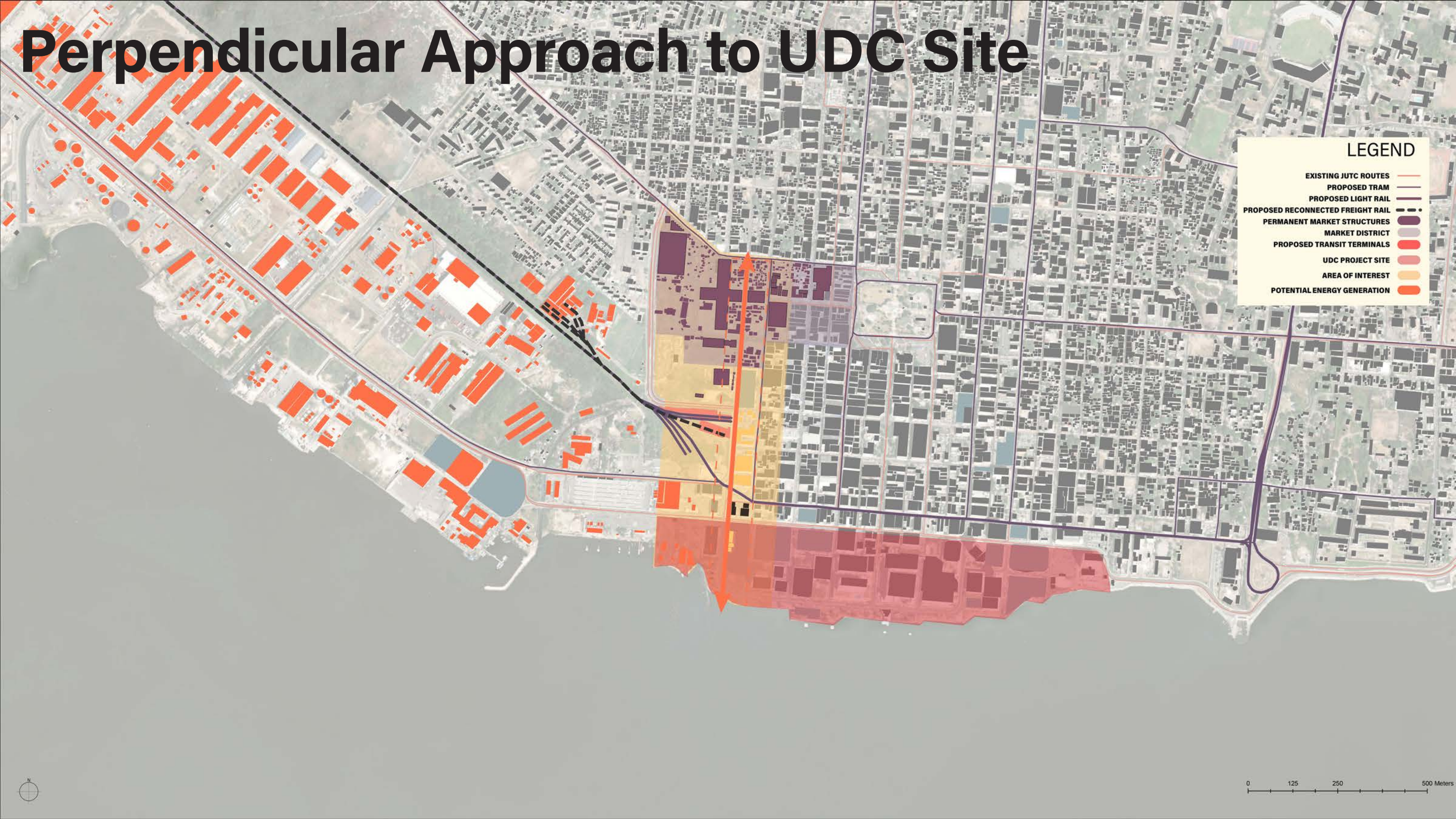
AREA OF INTEREST

POTENTIAL ENERGY GENERATION





# Perpendicular Approach to UDC Site



## LEGEND

- EXISTING JUTC ROUTES
- PROPOSED TRAM
- PROPOSED LIGHT RAIL
- PROPOSED RECONNECTED FREIGHT RAIL
- PERMANENT MARKET STRUCTURES
- MARKET DISTRICT
- PROPOSED TRANSIT TERMINALS
- UDC PROJECT SITE
- AREA OF INTEREST
- POTENTIAL ENERGY GENERATION



0 125 250 500 Meters





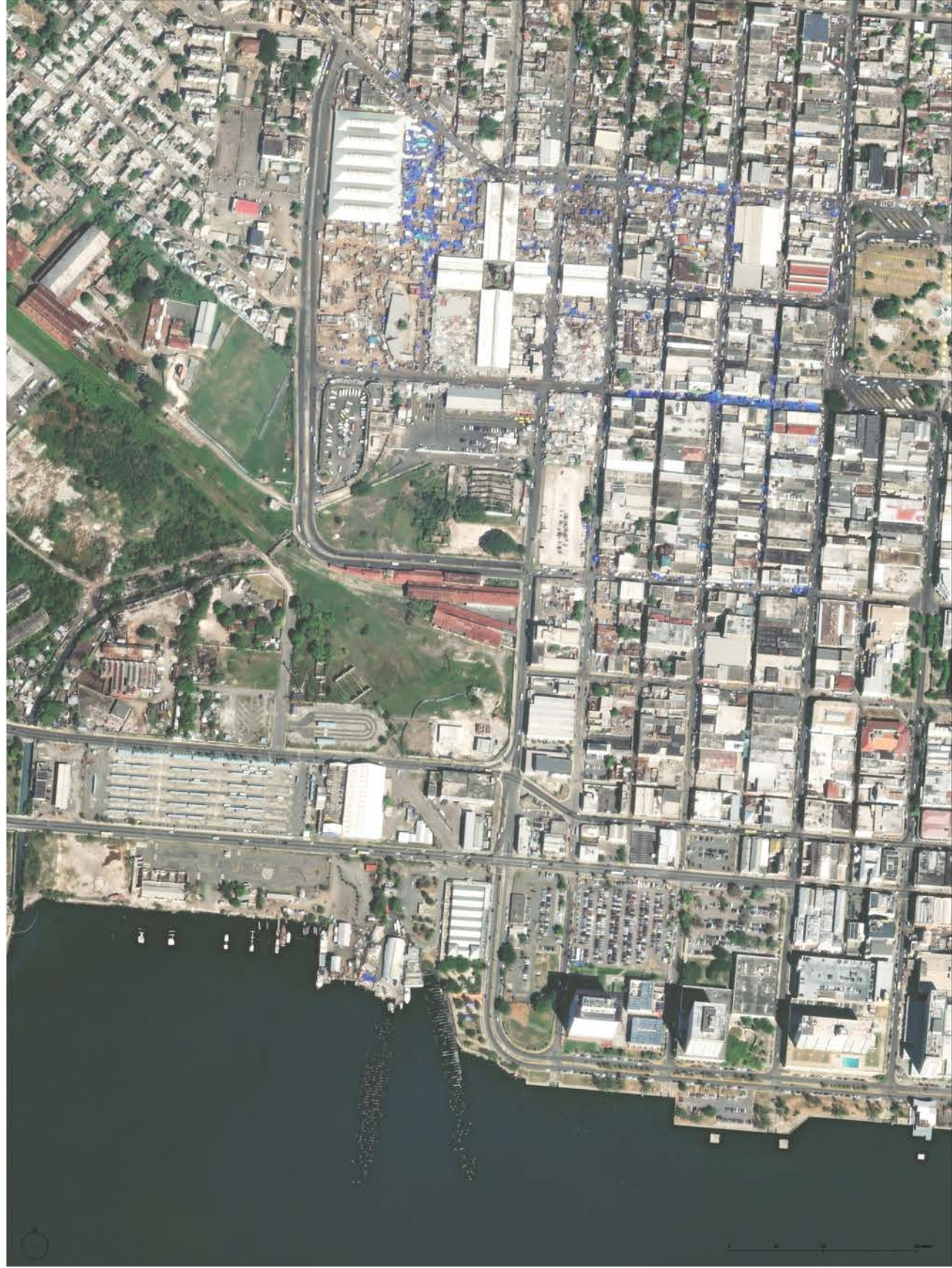
# Cutting a Path to the Water



0 125 250 500 Meters



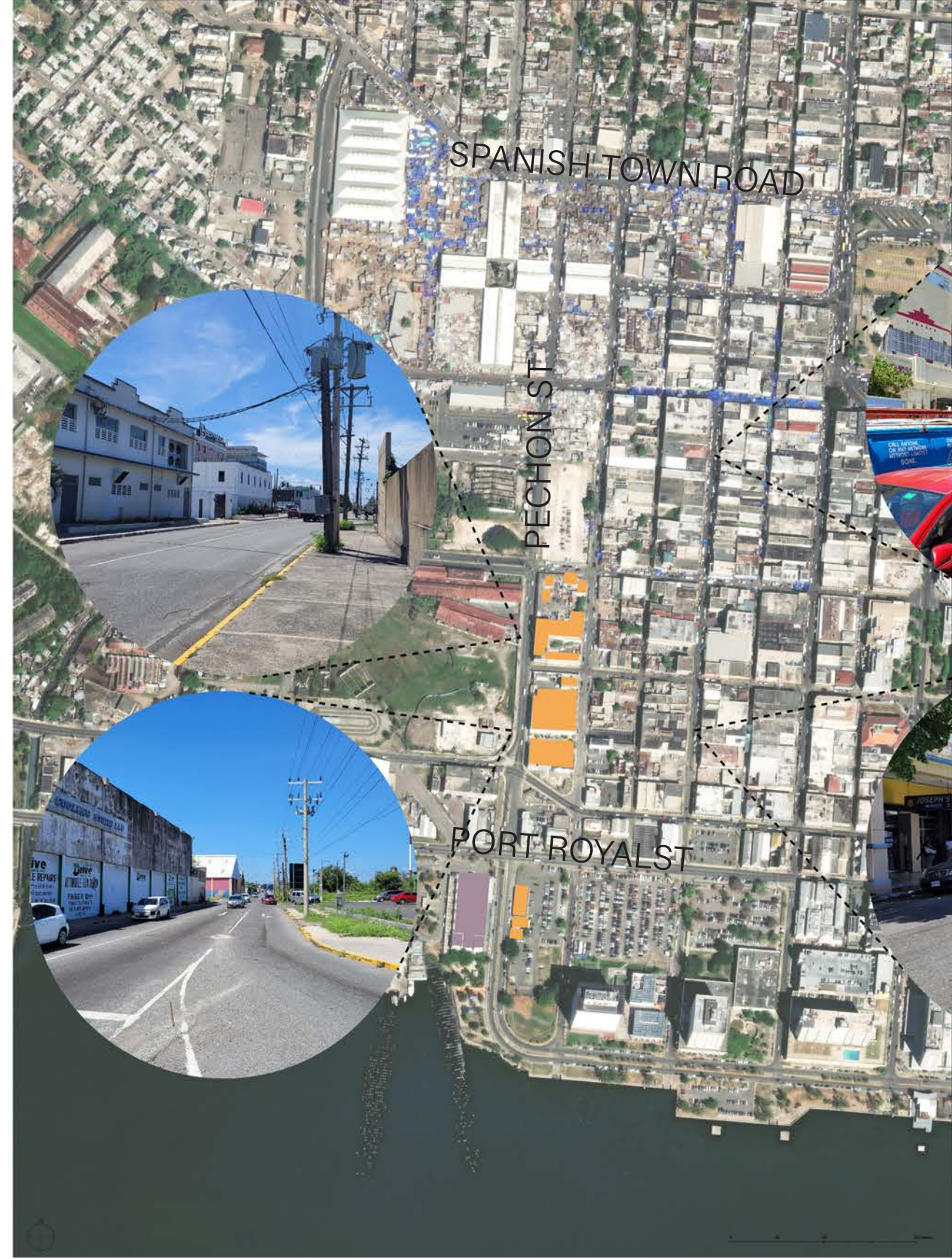
# AOI Context



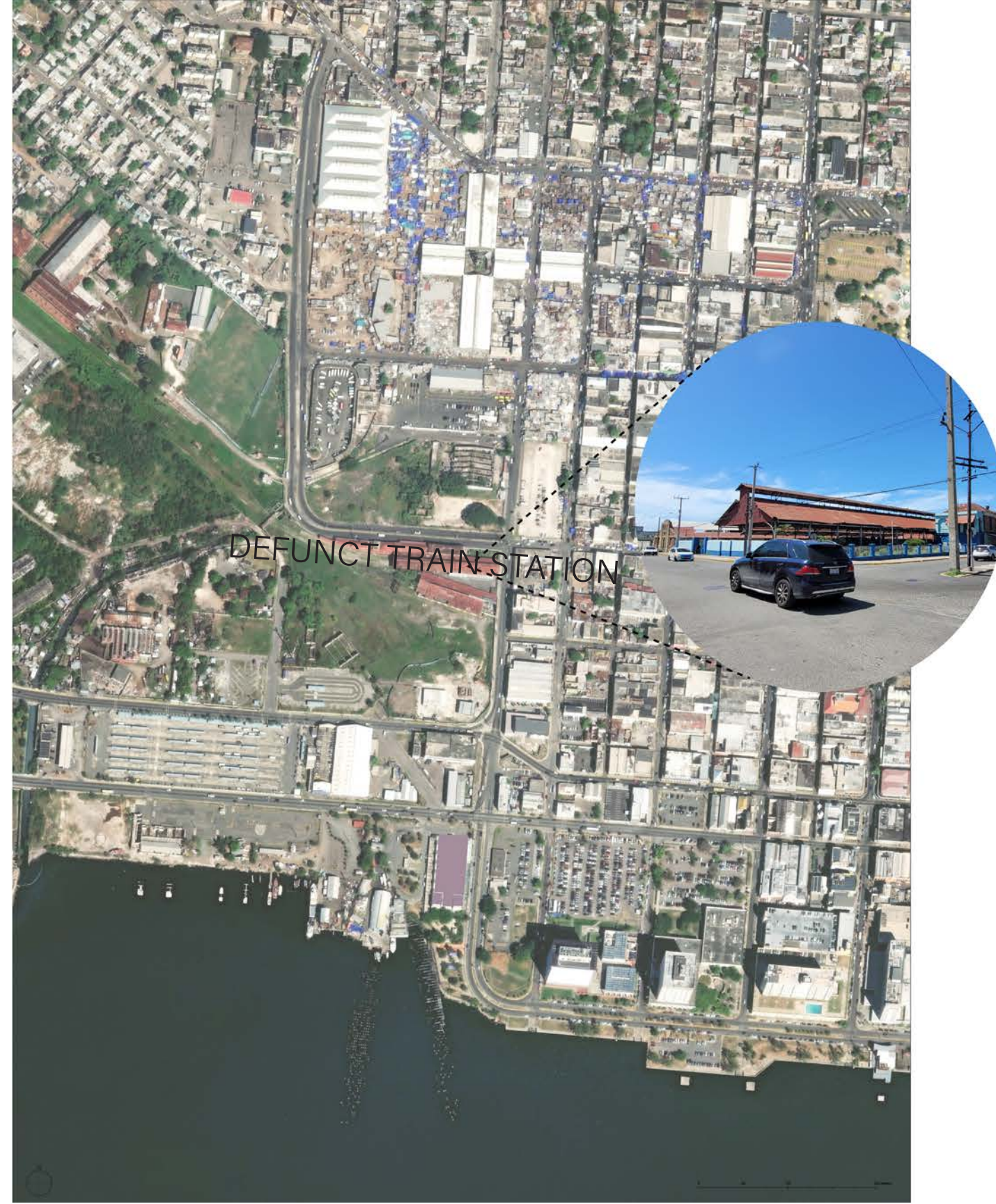






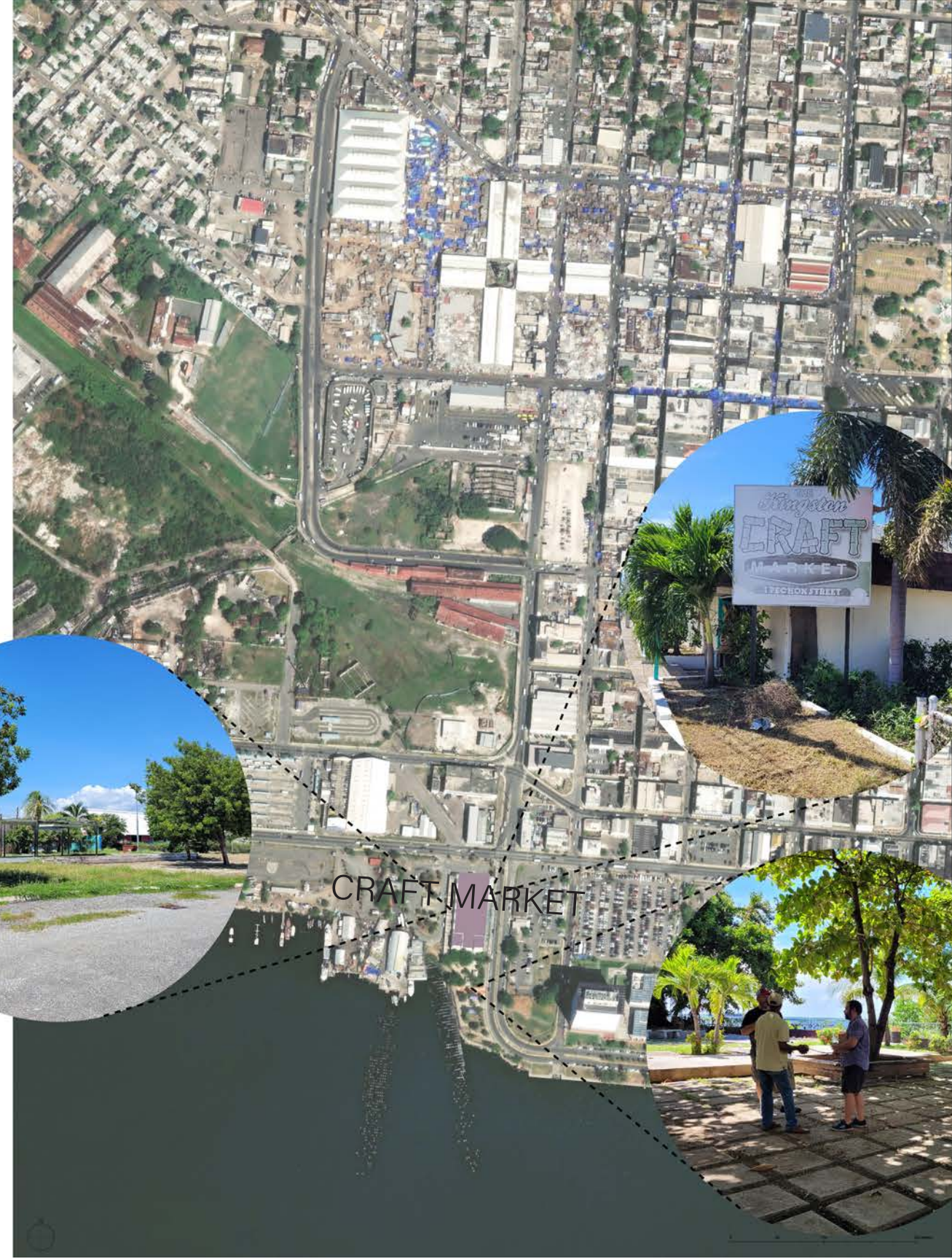






DEFUNCT TRAIN STATION



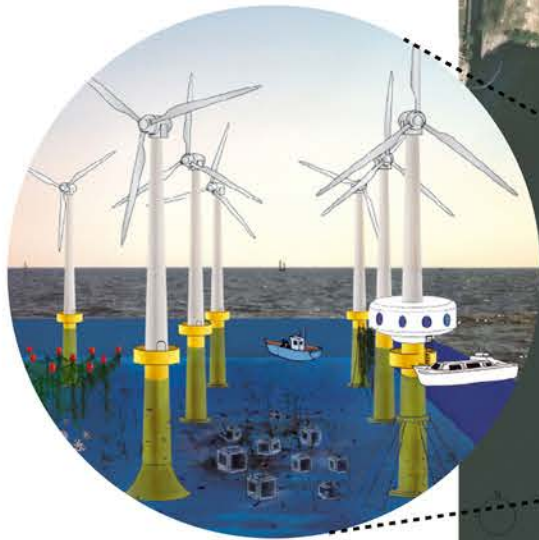
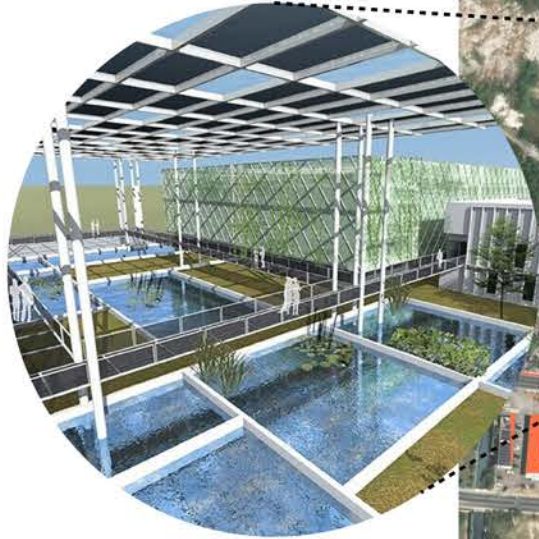




# AOI FRAMEWORK







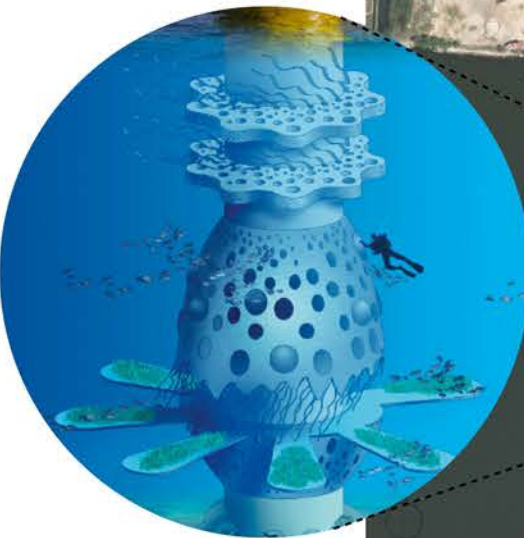
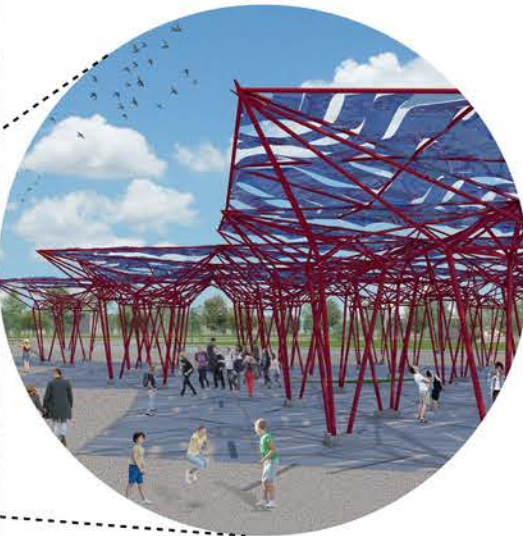
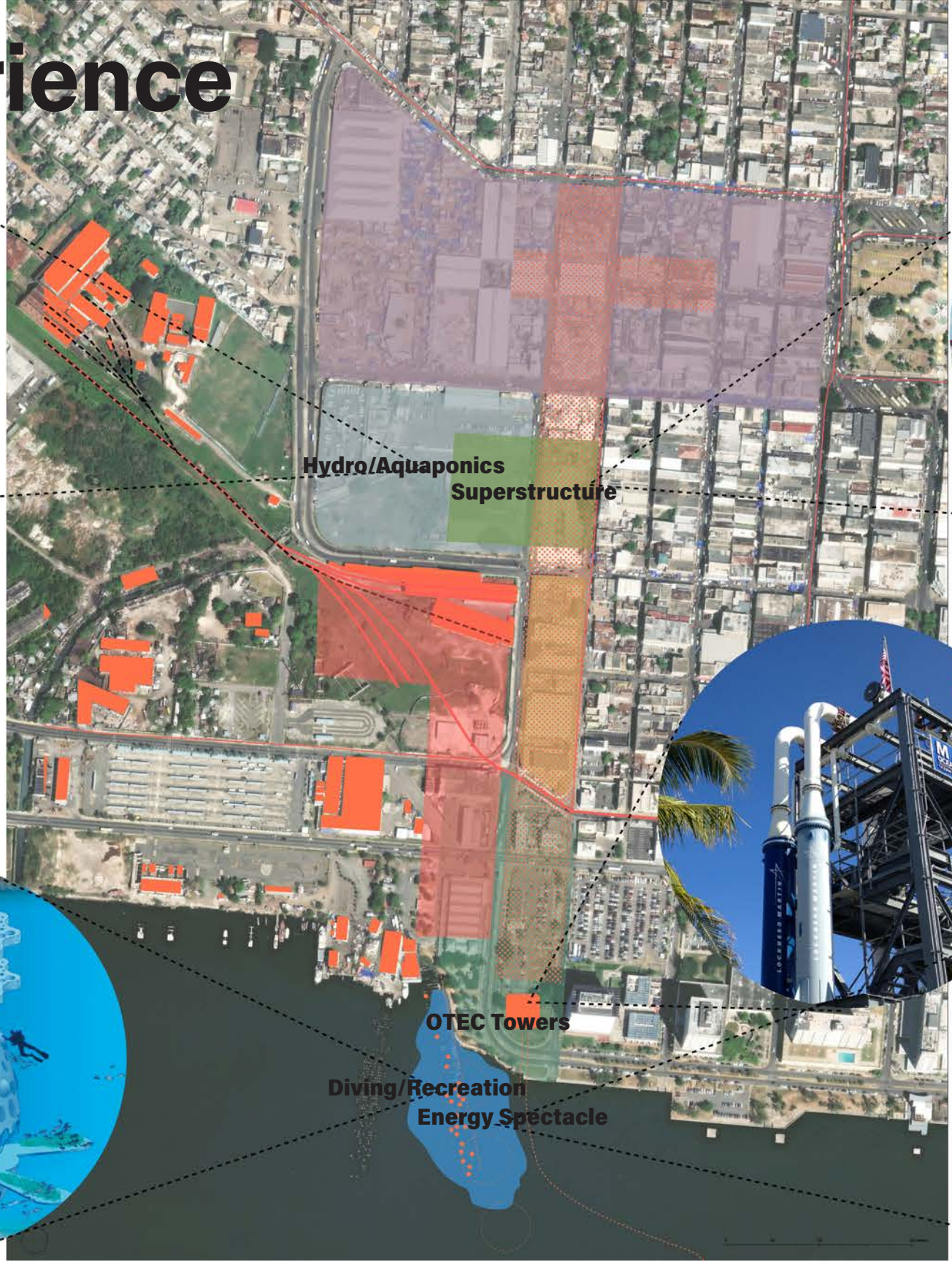
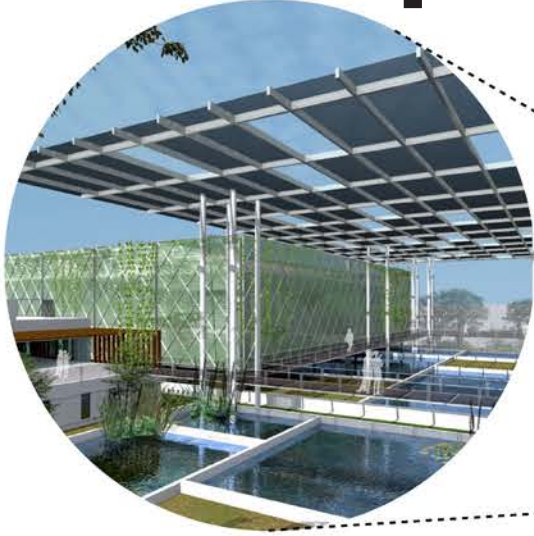


# Energy, Transit, Commerce





# A Novel Experience



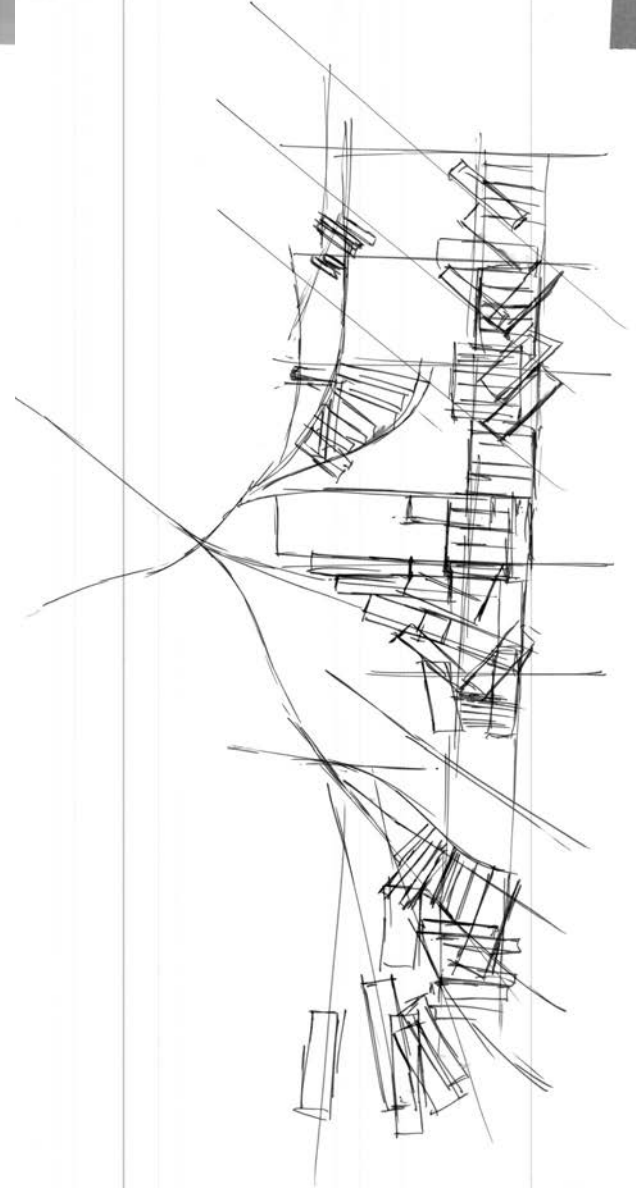
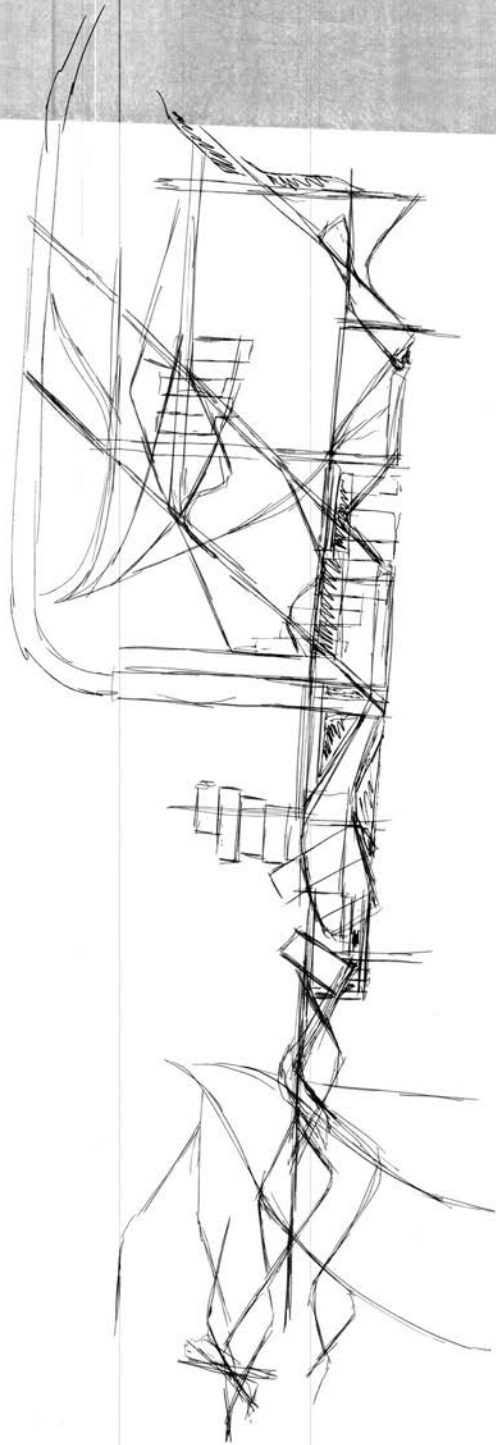


# The Conduit





# Form Exploration



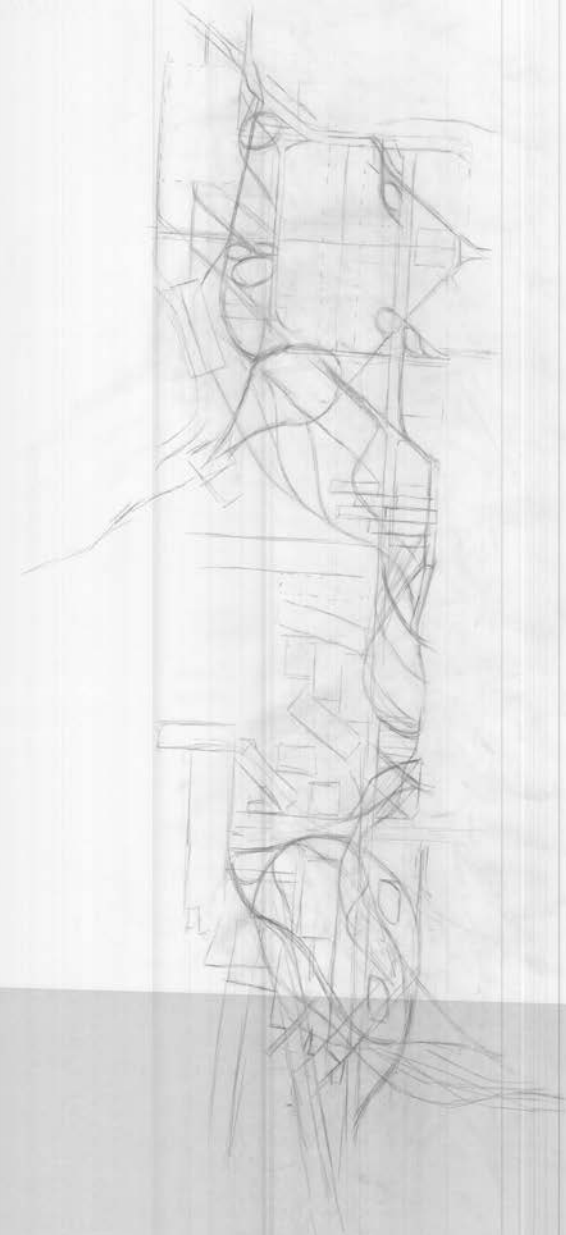
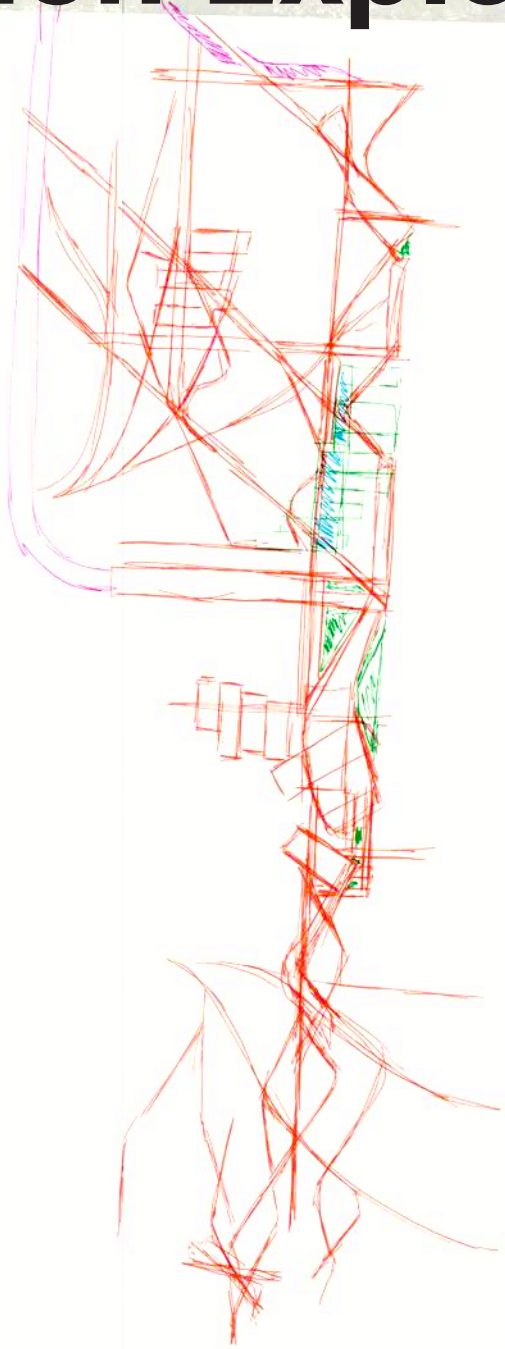


# Modular Exploration



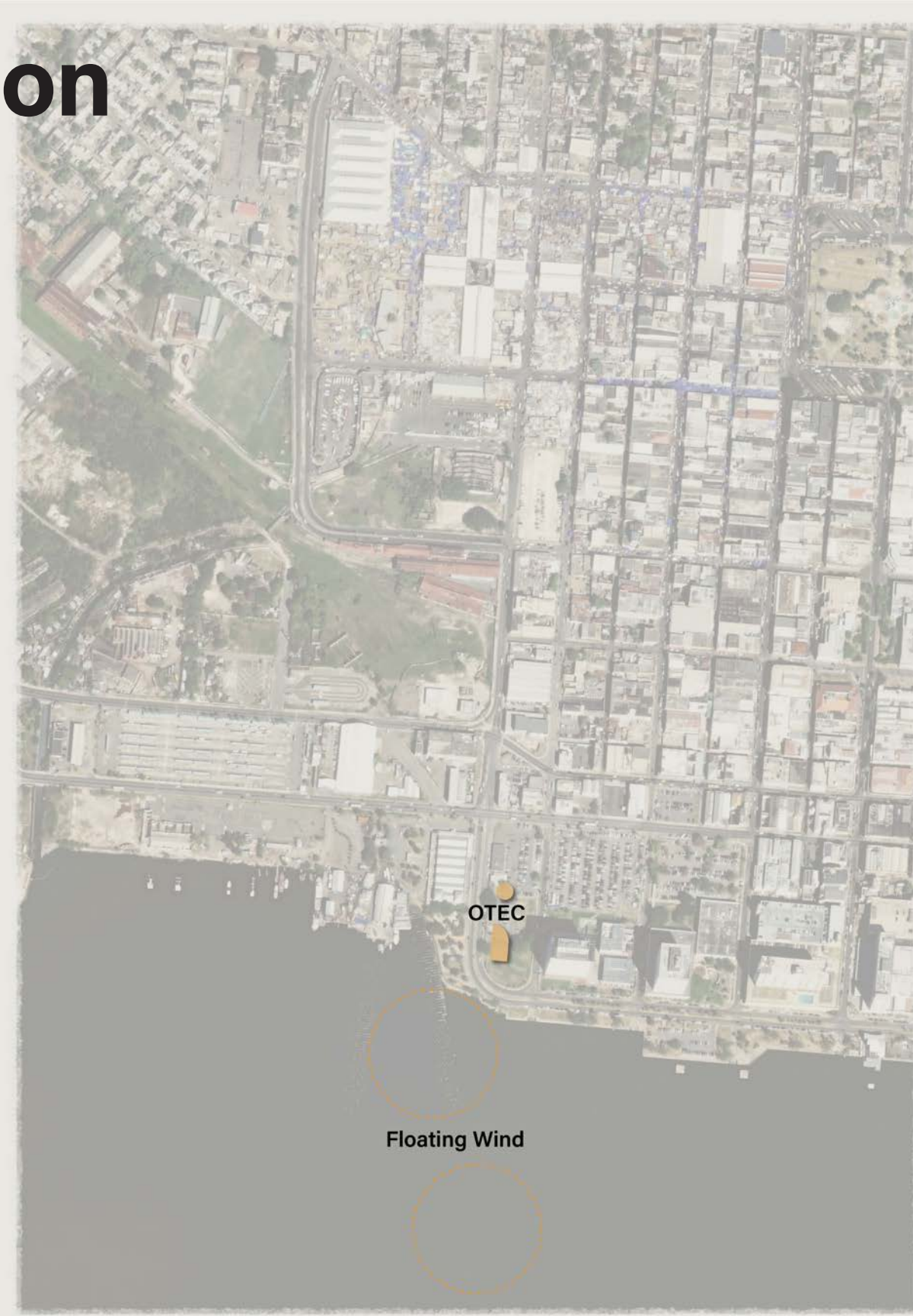


# Circulation Exploration





# Energy Production





# Transportation





# Commerce





# Existing Traffic Flow





# Limit Vehicular Access





# Market Matrix





# Circulation





# Manipulated Matrix





# Solar Fabric





# Canopy added





# Plan





Existing Axon





Conduit: Under the Hood





Conduit Axon

